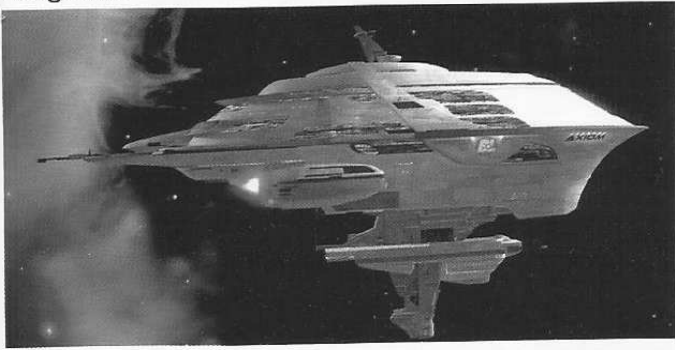


Commenter une image animée

1 Les plans et les angles

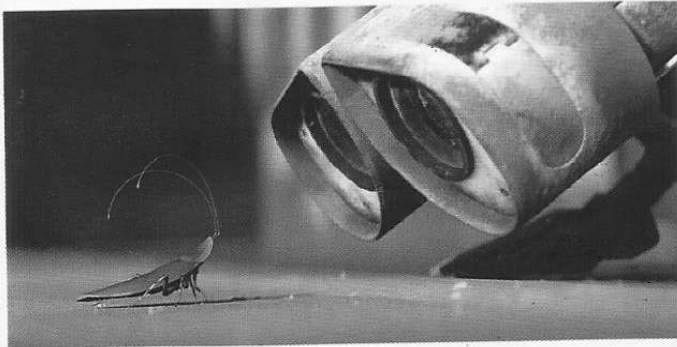
Long shot



Full shot



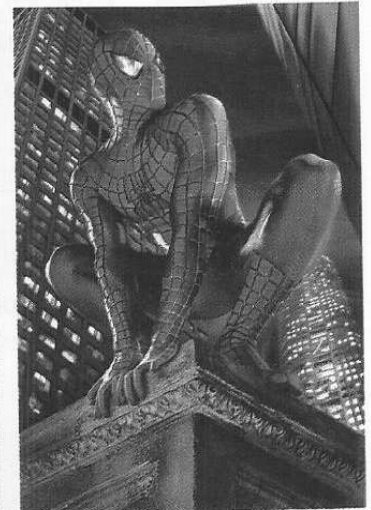
Medium shot



Close-up



High-angle shot



Low-angle shot

Associez chacun des principaux plans et angles ci-dessus à la définition correspondante.

- The camera shows the characters standing.
- The camera shows a distant object or landscape.
- The character is seen from below and the viewer feels dominated.
- The camera focuses on the character's head and shoulders.
- The shot makes the character look smaller and the viewer dominates the scene.
- The viewer can see details on a face or an object, generally to convey (= express) emotion.

2 Les mots essentiels

black and white movie
disaster film
comedy
thriller
musical
detective film
war / adventure film

cartoon
blockbuster
documentary
commercial
trailer: *bande-annonce*

shoot (shot, shot): *tourner*

3 Les bruits et les sons

soundtrack: *bande-son*
sound effect: *bruitage*
film score: *musique*
voice-over: *voix off*
male / female voice

lively / cheerful
dramatic
spooky: *qui fait froid dans le dos*
romantic
sugary: *sirupeux*
deafening: *assourdissant*
dull / muffled (sound): *étouffé*